

- For bolt implantation
- “Gold Tip” visible on CT
- For use in brain tissue

70 Microdialysis Bolt Catheter

Intended Purpose

The Brain Microdialysis Bolt Catheter is intended to enable microdialysis of the extracellular (interstitial) fluid of the brain tissue.

Minimally Invasive

The sterile single use 70 Bolt Microdialysis Catheter is minimally invasive and designed for implantation in brain tissue through the PTO 2L bolt kit from Raumedica or the IM3 Bolt Kit from Integra. The catheter has a 130 mm long shaft and a membrane length of 10 mm. The shaft has a reinforced stainless steel section measuring 16.5 mm in length. This reinforcement is located where the compression screw of the bolt is to be tightened.

The dialysing membrane of the catheter has been especially developed to achieve optimal diffusing characteristics. This allows a high recovery of substances from the extracellular fluid into the catheter.

The “Gold tip” makes the catheter visible on CT

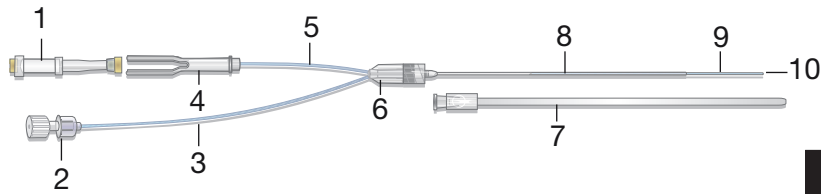
The tip of the catheter contains a gold thread. The “Gold tip” is visible on CT-scanning and makes it possible to locate the exact position of the catheter.

Early detection of local tissue chemistry changes in the brain

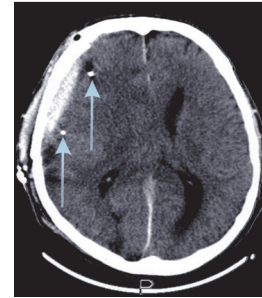
The 70 Bolt Microdialysis Catheter offers to collect samples manually in Microvials for analysis of Glucose, Lactate, Pyruvate, Glycerol, Glutamate and Urea in ISCUS*flex* Microdialysis Analyzer and gives the opportunity for early detection of local tissue changes in the brain.

For research purposes the collected samples can be further analyzed by various techniques such as HPLC.

Parts of the 70 Microdialysis Bolt Catheter



1. Microvial -consumable (polystyrene + santoprene)
2. Luer lock connection to syringe (polycarbonate)
3. Inlet tube (polyurethane)
4. Vial holder (polycarbonate)
5. Outlet tube (polyurethane)
6. Liquid cross with luerlock connection (ABS)
7. Protection tube (polyethylene)
8. Shaft (polyurethane) with a 16.5 mm stainless steel re-inforcement
9. Dialysis membrane (polyarylethersulphone)
10. Gold thread within the catheter tip



The distal part of the catheter has a gold thread (3 x 0.13 mm) within the catheter tip, which makes the catheter location in the tissue visible on CT

Technical information

	MATERIAL	LENGTH mm	Ø mm
shaft	polyurethane	130	OD 0.9
membrane	polyarylethersulphone	10	OD 0.6
inlet tube	polyurethane	600	OD 1.0
outlet tube	polyurethane	220	OD 1.0

membrane cut-off 20 000 Dalton

Ordering information

	Ref. No.
70 Microdialysis Bolt Catheter 4/pkg	P000131

Accessories / Consumables

	Ref. No.		Ref. No.
Microvials 250/pkg	P000001	106 Pump Syringe 20/pkg	8010191
Microvial Rack 12/pkg	P000028	Perfusion Fluid CNS 10x7,5mL	P000151
Microvials in rack, Sterile 12x4	P000154	Battery 6V, 1pc	8001788
106 Microdialysis Pump, 1pc	P000003	Pump kit for brain tissue, 1pc	8003791
107 Microdialysis Pump, 1pc	P000127		

STERILE | R

Sterilized by β -radiation



Storage temperature: 4-25°C



Single use only



Last date of use



Fulfils EU Medical Device Regulation (MDR) 2017/745



Medical Device